


Rotator Add-on

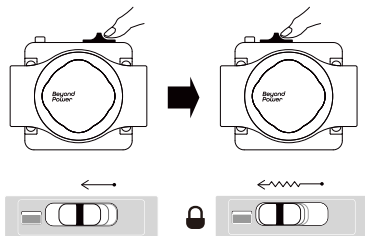
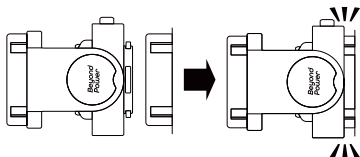
User Manual

*Beyond
Power*

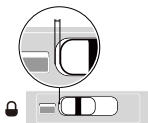
Installation

LOCK

Push device into the dock until it clicks securely.
Slide the slider to the  until it can no longer slide and feel the click sound.



ATTENTION



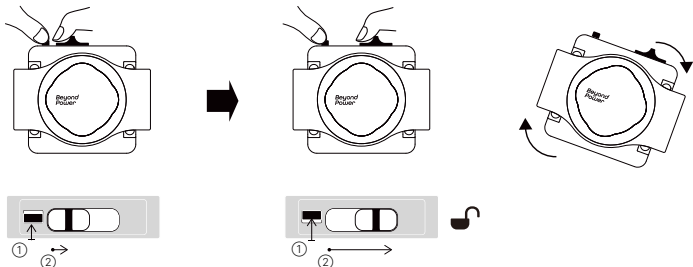
It is standard for the slider not to slide all the way down when locked. Just ensure that the slider is moved to the edge until it stops moving.



Make sure the device is properly locked before using it.

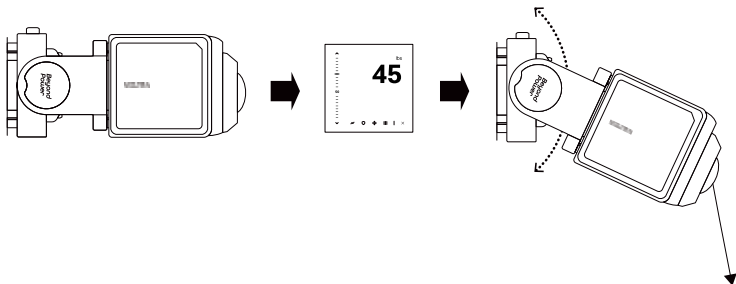
UNLOCK

Hold the secondary lock and slide the slider to  to unlock, then rotate to remove the device.



How to rotate

Mount the Voltra, set weight to 45lbs, and pull rope to rotate.



General Information

The Rotator Add-on is part of Beyond Power's AnyMount™ Series – a mount specifically designed to help users quickly adjust the VOLTRA I angle to better meet training needs and prolong the life of the cable.

For your safety, and to ensure the best experience and maximum gains, it is critical that you read and understand this manual before you begin using the Rotator Add-on. If you are unsure about anything, it is recommended to stop using the product and consult the help manual or seek advice from a professional before continuing to use VOLTRA I via our website. <https://www.beyond-power.com/support>, or by email at support@beyond-power.com.

Subject to compliance with laws and regulations, Beyond Power has the ultimate right to interpret the relevant documents of this product. When updated, revised, or terminated, no further notice will be given. Please visit the official Beyond Power website for the latest product information.

Important Safety Information

Minors

1. The Rotator Add-on is designed for individuals aged 18 and older. Keep children under the age of 13 away from VOLTRA I and the Rotator Add-on.
2. Teenagers aged 16 and above may use the Rotator Add-on during training under direct adult supervision if approved in advance by a physician. An adult should review all safety instructions with the minor before use.

Warning

1. It is the sole responsibility of the purchaser of Beyond Power products to read the owner's manual, warning labels and instruct all individuals, whether they are the end user or supervising personnel on proper usage of the Rotator Add-on.
2. It is recommended that the Rotator Add-on be located in an access controlled area. Control is the responsibility of the facility owner. The extent of control is at the discretion of the owner.
3. Use the Rotator Add-on exclusively for the purposes described in the user manual; only perform the exercises for which the device with dock has been designed, following the instructions given in the manual. Any other use should be considered incorrect and therefore dangerous.
4. Do not allow users to wear loose fitting clothing and shoes while using the Rotator Add-on. It is also recommended to have users secure long hair back to avoid contact with moving parts.
5. Do not use any accessories other than those recommended by Beyond Power. Attempting to repair or replace any damaged, worn, or broken parts not approved by Beyond Power could void the warranty. Please inform Beyond Power of any problems you experience.
6. The use of Rotator Add-on is prohibited under the influence of alcohol, drugs, medication or sedatives.
7. This product is not intended for use by persons with reduced physical, sensory or mental capabilities, or lack of experience and knowledge, unless they have been given supervision or instruction concerning the use of the product by a person responsible for their safety.
8. This product is intended for indoor use only. Do not leave the Rotator Add-on outdoors, exposed to the elements (rain, sun, wind, etc.). Do not expose the Rotator Add-on to water jets, at altitudes above 4000 meters, or at high humidity levels.
9. Before using the device, make sure that there are no other people or objects within the safety zone.

10. Improper use may result in personal injury or Rotator Addon damage, and removes all liability from the manufacturer and will void the warranty.
11. Keep hands and feet clear at all times from moving parts to avoid injury.
12. Ensure that the Rotator Addon securely locked into the dock according to operational requirements before use.
13. Sudden release of handle or other accessory will cause it to snap back uncontrollably and could result in serious injury or property damage. Maintain a firm grasp of your accessory during exercise. Ensure any hook or loop type accessories are fastened firmly before exercise. Carefully return the accessory to the start position before grip is released.
14. Never make adjustments to VOLTRA during exercise as this may cause muscle strain. Always return the cable to the start position prior to making any adjustments to help prevent injury.
15. Do not overexert yourself or work to exhaustion. Use reasonable judgment when selecting the resistance range. Avoid using excessive resistance, which may cause injury.

Disclaimer and Safety Summary

This product is not a toy. Do not allow children to come into contact with this product or its parts and cable. Please take extra care when using this product in the presence of children.

This product needs to be used with Voltra that provides easy and adjustable resistance training up to 200 lbs when all components are intact and the power source is functioning properly. Beyond Power Inc. reserves the right to update this 'Disclaimer and Safety Guidelines' at any time.

You should read the entire user manual and familiarize yourself with the product's functions before operating it. Incorrect operation of this product may cause serious injury to yourself or others, or damage to the product and property. While the product is easy to operate, it requires basic fitness knowledge, including understanding your maximum training strength to prevent the risk of injury during training. Without strong safety awareness, improper operation may result in product damage and property loss, or even serious injury to yourself and others. Do not use components that are not provided or recommended by Beyond Power.

Before assembly, setup, and use, be sure to visit the Beyond Power website (<https://www.beyond-power.com>) to download the 'User Manual' and carefully read all instructions and warnings. You understand and agree that without training records, Beyond Power may not be able to analyze the cause of product damage or accidents, and may not be able to provide warranty or after-sales services.

Beyond Power is not responsible for any losses caused by the user's failure to follow this document or the 'User Manual' when using the product.

By using this product, you are deemed to have understood, accepted, and agreed to all the terms and contents of this document. The user is responsible for their actions and all consequences therein. The user agrees to use this product solely for its intended purposes, and agrees to all the terms and contents of this document and any related policies or guidelines that may be formulated by Beyond Power.

Subject to compliance with laws and regulations, Beyond Power has the final right to interpret this document and all related documents of this product. In the event of updates, revisions, or termination, there will be no further notice. Please visit the Beyond Power official website to obtain the latest product information.

Warranty

The warranty period for this product is from the date of your initial retail purchase. For detailed after-sales service procedures and warranty terms, please visit <https://www.beyond-power.com/warranty>.

Subject to compliance with laws and regulations, Beyond Power has the final right to interpret this document and all related documents of this product. In the event of updates, revisions, or termination, there will be no further notice. Please visit the Beyond Power official website to obtain the latest product information.

Warranty

The warranty period for this product is from the date of your initial retail purchase. For detailed after-sales service procedures and warranty terms, please visit <https://www.beyond-power.com/warranty>.

Subscribe for more information



***Beyond
Power***

Copyright © 2025 Beyond Power Inc. All rights reserved.
Beyond Power, the Beyond Power logo, VOLTRA and AnyMount™ are trademarks
of Beyond Power Inc., filed application in the U.S. and China.

Printed in China.